



ENERGY SAVING RESULTS

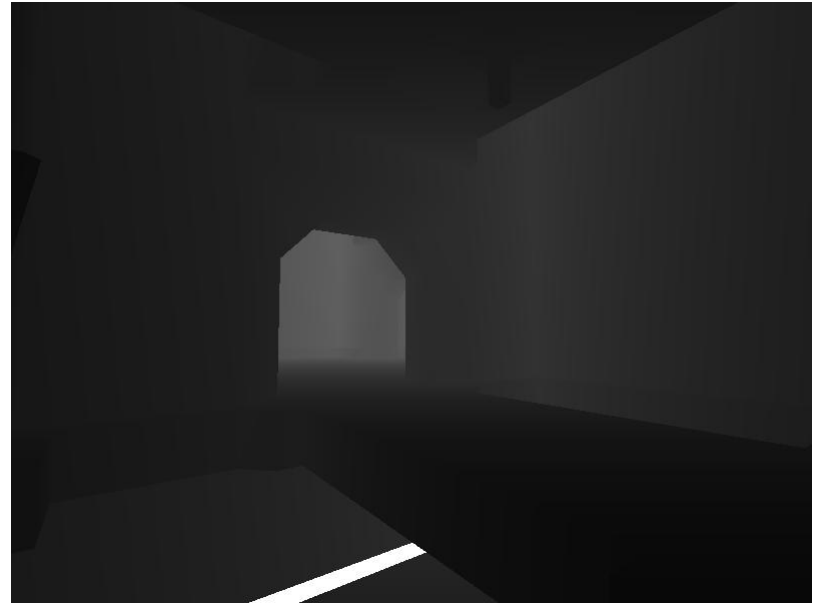
Haidong Chen



Input



Color Buffer



Depth Buffer

Bilateral Filter on Color Buffer



DOG on Color Buffer & Depth Buffer



DOG on Color
Buffer



DOG on Color
Buffer



DOG on Both

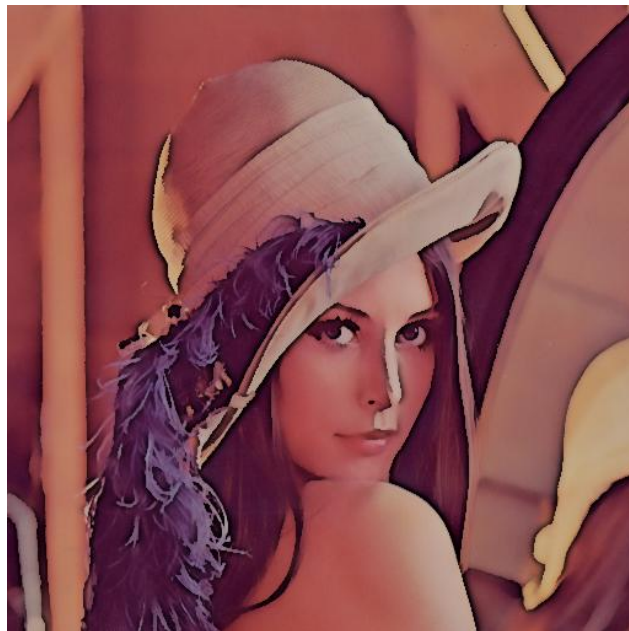
Results



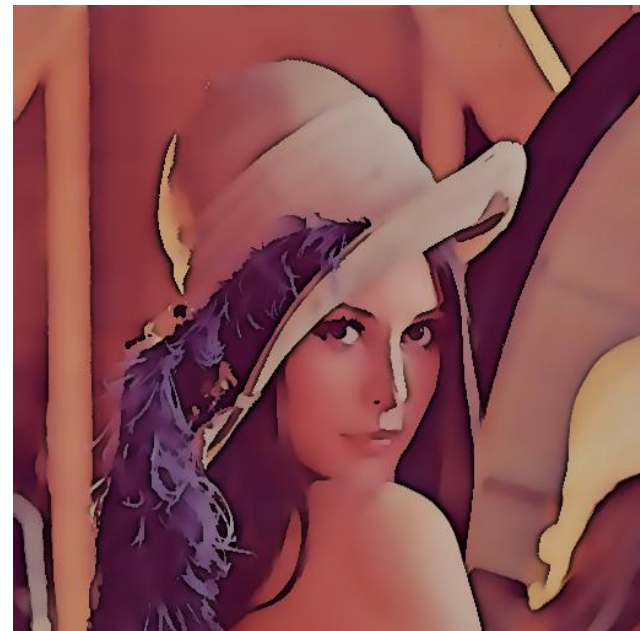
More Results



Input



Result
($\alpha=0.5$
 $\beta=0.8$)



Pure NPR
($\alpha=0$)

Conclusion & Future Work

- ◆ 纹理细节较多的场景，在Color buffer中进行边检测结果不好；
- ◆ 这套算法比较适合颜色分布比较集中的场景，如前面结果中的Lena案例；
- ◆ 优化Bilateral filter，该算法非常耗时；
- ◆ 结果评估

THANKS

